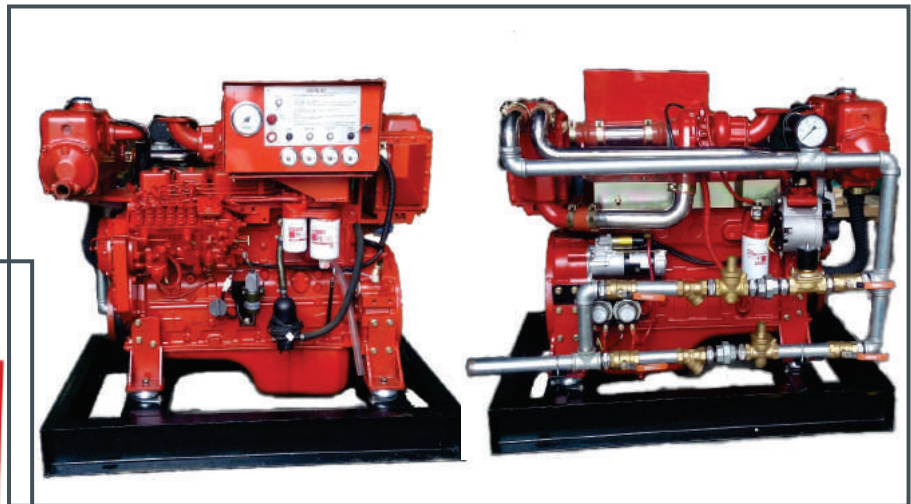
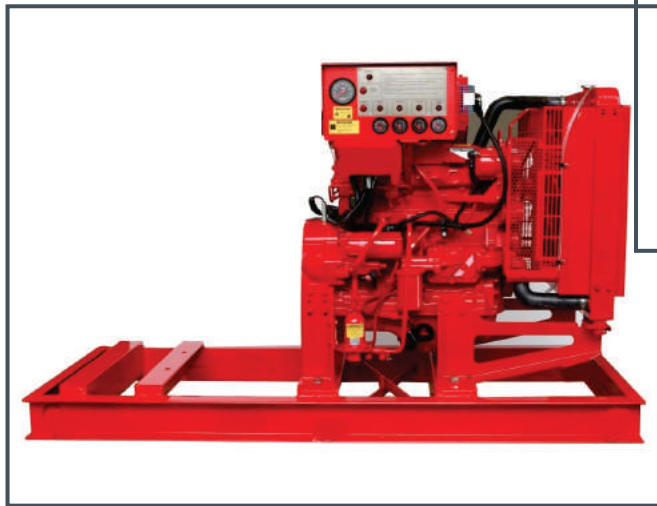


# Fire Pump Power

Brief catalogue



**HE=HEAT EXCHANGER WATER COOLED DIESEL ENGINE**

**R=RADIATOR WATER COOLED DIESEL ENGINE**





**VERSA<sup>®</sup> INDUSTRIES** is an established assembler of premium custom diesel fire pump engine packages specializing in the design, development and distribution of NFPA 20 compliant diesel fire pump drivers. **VERSA<sup>®</sup> ENGINE** is the first choice among leading OEM's, contractors and engineers in the fire protection industry.

| NO | MODEL        | NO.OF CYLINDERS | RATED HP | RATED SPEED (RPM) | COOLING SYSTEM TYPE |
|----|--------------|-----------------|----------|-------------------|---------------------|
| 1  | VE 440F-R    | 4               | 39       | 3000              | RADIATOR            |
| 2  | VE 440F-HE   | 4               | 39       | 3000              | HEAT EXCHANGER      |
| 3  | VE 458F-R    | 4               | 57       | 3000              | RADIATOR            |
| 4  | VE 458F-HE   | 4               | 57       | 3000              | HEAT EXCHANGER      |
| 5  | VE 485F-R    | 4               | 85       | 3000              | RADIATOR            |
| 6  | VE 485F-HE   | 4               | 85       | 3000              | HEAT EXCHANGER      |
| 7  | VE 4100J-R   | 4               | 100      | 2900              | RADIATOR            |
| 8  | VE 4100J-HE  | 4               | 100      | 2900              | HEAT EXCHANGER      |
| 9  | VE 4130JZ-R  | 4               | 130      | 2900              | RADIATOR            |
| 10 | VE 4130JZ-HE | 4               | 130      | 2900              | HEAT EXCHANGER      |
| 11 | VE 6140B-R   | 6               | 145      | 2900              | RADIATOR            |
| 12 | VE 6140B-HE  | 6               | 145      | 2900              | HEAT EXCHANGER      |
| 13 | VE 6205BZ-R  | 6               | 205      | 2900              | RADIATOR            |
| 14 | VE 6205BZ-HE | 6               | 205      | 2900              | HEAT EXCHANGER      |
| 15 | VE 6240BCZ-R | 6               | 240      | 2900              | RADIATOR            |



| NO | MODEL          | NO.OF CYLINDERS | RATED HP | RATED SPEED (RPM) | COOLING SYSTEM TYPE |
|----|----------------|-----------------|----------|-------------------|---------------------|
| 16 | VE 6240BCZ-HE  | 6               | 240      | 2900              | HEAT EXCHANGER      |
| 17 | VE 6270BCL-R   | 6               | 272      | 2900              | RADIATOR            |
| 18 | VE 6270BCL-HE  | 6               | 272      | 2900              | HEAT EXCHANGER      |
| 19 | VE 6300BCL-HE  | 6               | 300      | 2900              | HEAT EXCHANGER      |
| 20 | VE 6300BCL-R   | 6               | 300      | 2900              | RADIATOR            |
| 21 | VE 6740MNTF-HE | 6               | 335      | 2950              | HEAT EXCHANGER      |
| 22 | VE 6740MNTF-R  | 6               | 335      | 2950              | RADIATOR            |
| 23 | VE 6350WL-HE   | 6               | 350      | 2900              | HEAT EXCHANGER      |
| 24 | VE 6400WL-HE   | 6               | 400      | 2900              | HEAT EXCHANGER      |
| 25 | VE 48595-R     | 4               | 45       | 3000              | RADIATOR            |
| 26 | VE 4100118-R   | 4               | 75       | 3000              | RADIATOR            |
| 27 | VE 4108118-R   | 4               | 105      | 3000              | RADIATOR            |
| 28 | VE 6T59162-R   | 6               | 162      | 2900              | RADIATOR            |
| 29 | VE 6T59162-HE  | 6               | 162      | 2900              | HEAT EXCHANGER      |
| 30 | VE 659205-R    | 6               | 205      | 2900              | RADIATOR            |
| 31 | VE 659205-HE   | 6               | 205      | 2900              | HEAT EXCHANGER      |
| 32 | VE 659240-R    | 6               | 240      | 2900              | RADIATOR            |



| NO | MODEL            | NO.OF CYLINDERS | RATED HP  | RATED SPEED (RPM) | COOLING SYSTEM TYPE |
|----|------------------|-----------------|-----------|-------------------|---------------------|
| 33 | VE 659240-HE     | 6               | 240       | 2900              | HEAT EXCHANGER      |
| 34 | VE 12923WDTAB-R  | 6               | 320 / 353 | 1500 / 1800       | RADIATOR            |
| 35 | VE 12923WDTAB-HE | 6               | 320 / 353 | 1500 / 1800       | HEAT EXCHANGER      |
| 36 | VE 12925WDTAB-R  | 6               | 351 / 387 | 1500 / 1800       | RADIATOR            |
| 37 | VE 12925WDTAB-HE | 6               | 351 / 387 | 1500 / 1800       | HEAT EXCHANGER      |
| 38 | VE 13528WDTAB-R  | 6               | 381 / 419 | 1500 / 1800       | RADIATOR            |
| 39 | VE 13528WDTAB-HE | 6               | 381 / 419 | 1500 / 1800       | HEAT EXCHANGER      |
| 40 | VE 14530WDTAB-R  | 6               | 421 / 463 | 1500 / 1800       | RADIATOR            |
| 41 | VE 14530WDTAB-HE | 6               | 421 / 463 | 1500 / 1800       | HEAT EXCHANGER      |
| 42 | VE 14533WDTAB-R  | 6               | 461 / 508 | 1500 / 1800       | RADIATOR            |
| 43 | VE 14533WDTAB-HE | 6               | 461 / 508 | 1500 / 1800       | HEAT EXCHANGER      |
| 44 | VE 14535WDTAB-R  | 6               | 481 / 528 | 1500 / 1800       | RADIATOR            |
| 45 | VE 14535WDTAB-HE | 6               | 481 / 528 | 1500 / 1800       | HEAT EXCHANGER      |
| 46 | VE 26938WDTAB-R  | 12              | 520 / 572 | 1500 / 1800       | RADIATOR            |
| 47 | VE 26938WDTAB-HE | 12              | 520 / 572 | 1500 / 1800       | HEAT EXCHANGER      |
| 48 | VE 26971WDTAB-R  | 12              | 569 / 626 | 1500 / 1800       | RADIATOR            |
| 49 | VE 26941WDTAB-HE | 12              | 569 / 626 | 1500 / 1800       | HEAT EXCHANGER      |



| NO | MODEL            | NO.OF CYLINDERS | RATED HP   | RATED SPEED (RPM) | COOLING SYSTEM TYPE |
|----|------------------|-----------------|------------|-------------------|---------------------|
| 50 | VE 26943WDTAB-R  | 6               | 588 / 646  | 1500 / 1800       | RADIATOR            |
| 51 | VE 26943WDTAB-HE | 6               | 588 / 646  | 1500 / 1800       | HEAT EXCHANGER      |
| 52 | VE 26945WDTAB-R  | 6               | 632 / 670  | 1500 / 1800       | RADIATOR            |
| 53 | VE 26945WDTAB-HE | 6               | 632 / 670  | 1500 / 1800       | HEAT EXCHANGER      |
| 54 | VE 26948WDTAB-R  | 6               | 656 / 721  | 1500 / 1800       | RADIATOR            |
| 55 | VE 26948WDTAB-HE | 6               | 656 / 721  | 1500 / 1800       | HEAT EXCHANGER      |
| 56 | VE 26950WDTAB-R  | 6               | 689 / 757  | 1500 / 1800       | RADIATOR            |
| 57 | VE 26950WDTAB-HE | 6               | 689 / 757  | 1500 / 1800       | HEAT EXCHANGER      |
| 58 | VE 26956WDTAB-R  | 6               | 765 / 841  | 1500 / 1800       | RADIATOR            |
| 59 | VE 26956WDTAB-HE | 6               | 765 / 841  | 1500 / 1800       | HEAT EXCHANGER      |
| 60 | VE 28758WDTAB-R  | 12              | 800 / 880  | 1500 / 1800       | RADIATOR            |
| 61 | VE 28758WDTAB-HE | 12              | 800 / 880  | 1500 / 1800       | HEAT EXCHANGER      |
| 62 | VE 28761WDTAB-R  | 12              | 841 / 925  | 1500 / 1800       | RADIATOR            |
| 63 | VE 28761WDTAB-HE | 12              | 841 / 925  | 1500 / 1800       | HEAT EXCHANGER      |
| 64 | VE 28768WDTAB-R  | 12              | 928 / 1020 | 1500 / 1800       | RADIATOR            |
| 65 | VE 28768WDTAB-HE | 12              | 928 / 1020 | 1500 / 1800       | HEAT EXCHANGER      |
| 66 | VE 16443WDTAB-R  | 12              | 585 / 644  | 1500 / 1800       | RADIATOR            |



| NO | MODEL             | NO.OF CYLINDERS | RATED HP    | RATED SPEED (RPM) | COOLING SYSTEM TYPE |
|----|-------------------|-----------------|-------------|-------------------|---------------------|
| 67 | VE 16443WDTAB-HE  | 12              | 585 / 644   | 1500 / 1800       | HEAT EXCHANGER      |
| 68 | VE 16445WDTAB-R   | 12              | 612 / 674   | 1500 / 1800       | RADIATOR            |
| 69 | VE 16445WDTAB-HE  | 12              | 612 / 674   | 1500 / 1800       | HEAT EXCHANGER      |
| 70 | VE 32768WDTAB-R   | 12              | 928 / 1020  | 1500 / 1800       | RADIATOR            |
| 71 | VE 32768WDTAB-HE  | 12              | 928 / 1020  | 1500 / 1800       | HEAT EXCHANGER      |
| 72 | VE 32773WDTAB-R   | 12              | 993 / 1093  | 1500 / 1800       | RADIATOR            |
| 73 | VE 32773WDTAB-HE  | 12              | 993 / 1093  | 1500 / 1800       | HEAT EXCHANGER      |
| 74 | VE 32778WDTAB-R   | 12              | 1061 / 1167 | 1500 / 1800       | RADIATOR            |
| 75 | VE 32778WDTAB-HE  | 12              | 1061 / 1167 | 1500 / 1800       | HEAT EXCHANGER      |
| 76 | VE 32782WDTAB-R   | 12              | 1116 / 1227 | 1500 / 1800       | RADIATOR            |
| 77 | VE 32782WDTAB-HE  | 12              | 1116 1227   | 1500 / 1800       | HEAT EXCHANGER      |
| 78 | VE 32788WDTAB-R   | 12              | 1200 / 1320 | 1500 / 1800       | RADIATOR            |
| 79 | VE 32788WDTAB-HE  | 12              | 1200 / 1320 | 1500 / 1800       | HEAT EXCHANGER      |
| 80 | VE 32792WDTAB-R   | 12              | 1252 / 1377 | 1500 / 1800       | RADIATOR            |
| 81 | VE 32792WDTAB-HE  | 12              | 1252 / 1377 | 1500 / 1800       | HEAT EXCHANGER      |
| 82 | VE 327100WDTAB-R  | 12              | 1360 / 1500 | 1500 / 1800       | RADIATOR            |
| 83 | VE 327100WDTAB-HE | 12              | 1360 / 1500 | 1500 / 1800       | HEAT EXCHANGER      |



| NO  | MODEL             | NO.OF CYLINDERS | RATED HP    | RATED SPEED (RPM) | COOLING SYSTEM TYPE |
|-----|-------------------|-----------------|-------------|-------------------|---------------------|
| 84  | VE 360110WDTAB-R  | 12              | 1500 / 1646 | 1500 / 1800       | RADIATOR            |
| 85  | VE 360110WDTAB-HE | 12              | 1500 / 1646 | 1500 / 1800       | HEAT EXCHANGER      |
| 86  | VE 360120WDTAB-R  | 12              | 1632 / 1796 | 1500 / 1800       | RADIATOR            |
| 87  | VE 360120WDTAB-HE | 12              | 1632 / 1796 | 1500 / 1800       | HEAT EXCHANGER      |
| 88  | VE 6115AB-R       | 6               | 103 / 113   | 1500 / 1800       | RADIATOR            |
| 89  | VE 6115AB-HE      | 6               | 103 / 113   | 1500 / 1800       | HEAT EXCHANGER      |
| 90  | VE 6170ABZ-R      | 6               | 155 / 170   | 1500 / 1800       | RADIATOR            |
| 91  | VE 6170ABZ-HE     | 6               | 155 / 170   | 1500 / 1800       | HEAT EXCHANGER      |
| 92  | VE 6210ABL-R      | 6               | 189 / 208   | 1500 / 1800       | RADIATOR            |
| 93  | VE 6210ABL-HE     | 6               | 189 / 208   | 1500 / 1800       | HEAT EXCHANGER      |
| 94  | VE 6225ABL-R      | 6               | 204 / 225   | 1500 / 1800       | RADIATOR            |
| 95  | VE 6225ABL-HE     | 6               | 204 / 225   | 1500 / 1800       | HEAT EXCHANGER      |
| 96  | VE 6245LAL-R      | 6               | 224 / 246   | 1500 / 1800       | RADIATOR            |
| 97  | VE 6245LAL-HE     | 6               | 224 / 246   | 1500 / 1800       | HEAT EXCHANGER      |
| 98  | VE 6285LAL-R      | 6               | 261 / 287   | 1500 / 1800       | RADIATOR            |
| 99  | VE 6285LAL-HE     | 6               | 261 / 287   | 1500 / 1800       | HEAT EXCHANGER      |
| 100 | VE 6350LML-R      | 6               | 319 / 351   | 1500 / 1800       | RADIATOR            |





| NO  | MODEL           | NO.OF CYLINDERS | RATED HP  | RATED SPEED (RPM) | COOLING SYSTEM TYPE |
|-----|-----------------|-----------------|-----------|-------------------|---------------------|
| 101 | VE 6350LML-HE   | 6               | 319 / 351 | 1500 / 1800       | HEAT EXCHANGER      |
| 102 | VE 6390LML-R    | 6               | 353 / 388 | 1500 / 1800       | RADIATOR            |
| 103 | VE 6390LML-HE   | 6               | 353 / 388 | 1500 / 1800       | HEAT EXCHANGER      |
| 104 | VE 6470MKL-R    | 6               | 425 / 467 | 1500 / 1800       | RADIATOR            |
| 105 | VE 6470MKL-HE   | 6               | 425 / 467 | 1500 / 1800       | HEAT EXCHANGER      |
| 106 | VE 6510MKL-R    | 6               | 463 / 509 | 1500 / 1800       | RADIATOR            |
| 107 | VE 6510MKL-HE   | 6               | 463 / 509 | 1500 / 1800       | HEAT EXCHANGER      |
| 108 | VE 6570MJL-R    | 6               | 519 / 571 | 1500 / 1800       | RADIATOR            |
| 109 | VE 6570MJL-HE   | 6               | 519 / 571 | 1500 / 1800       | HEAT EXCHANGER      |
| 110 | VE 6600MJL-R    | 6               | 545 / 599 | 1500 / 1800       | RADIATOR            |
| 111 | VE 6600MJL-HE   | 6               | 545 / 599 | 1500 / 1800       | HEAT EXCHANGER      |
| 112 | VE 26945TAD-R   | 6               | 633 / 697 | 1500 / 1800       | RADIATOR            |
| 113 | VE 26945TAD-HE  | 6               | 633 / 697 | 1500 / 1800       | HEAT EXCHANGER      |
| 114 | VE 6040NENTF-HE | 6               | 401       | 2950              | HEAT EXCHANGER      |
| 115 | VE 6742NMNTF-R  | 6               | 268       | 2950              | RADIATOR            |





### **Standard Equipment:**

- Flywheel - Housing
- Standard Setting
- Starting Motor & Alternator
- Fitted radiator with guard and fan ( R Type )
- Fitted cooling water pipe system ( HE Type )
- Air, Fuel and oil filter
- Stop / Fuel solenoid
- Rigid mounting
- Silencer (loose)
- Flexible flanged exhaust bellow
- Twin starter solenoid
- Magnetic pick - up
- Overspeed shutdown protection
- Engine instrument control panel with NFPA 20 requirement c/w "Auto / Manual" selector switch, stop button, tachometer with hourmeter, oil pressure gauge, water temperature gauge and battery charging light.

### **Engine Selection :**

Please ADD a 20 % margin to your pump power requirement (kW), after you have considered pump absorbed power and efficiency of your pump (at the top of the appropriate impeller curve). This now determines the minimum power requirement for the engine to drive your pump.

\* For radiator cooled engine installed in enclosed pump room, hot air from radiator must be ducted out to prevent heat re-circulation and temperature build up in the pump room that affect engine performance.